

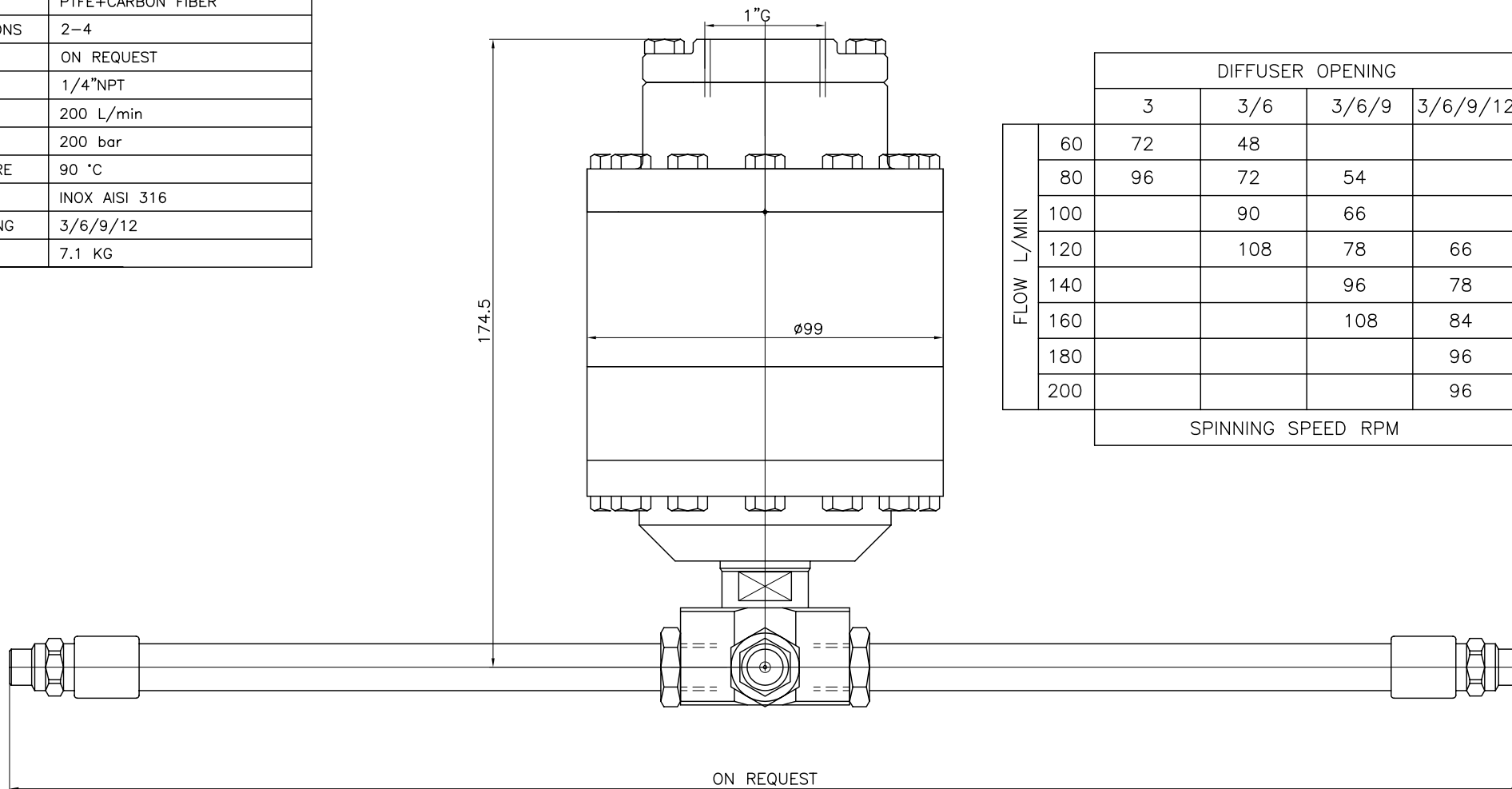
TECHNICAL DATA	
O.RING	EPDM-NBR
SLIPPER	PTFE+CARBON FIBER
NOZZLES POSITIONS	2-4
NOZZLES CIRCLE	ON REQUEST
NOZZLES SIZE	1/4"NPT
MAX FLOW	200 L/min
MAX PRESSURE	200 bar
MAX TEMPERATURE	90 °C
MATERIAL	INOX AISI 316
DIFFUSER OPENING	3/6/9/12
WEIGHT	7.1 KG



總代理

思沛雅噴霧器材有限公司

22205 新北市深坑區北深路三段270巷8號3樓 TEL. 02-8662-6968 FAX. 02-8662-6967
Website : www.sprayernozzle.com.tw E-mail : sales@sprayernozzle.com.tw



		DIFFUSER OPENING			
		3	3/6	3/6/9	3/6/9/12
FLOW L/MIN	60	72	48		
	80	96	72	54	
	100		90	66	
	120		108	78	66
	140			96	78
	160			108	84
	180				96
	200				96
SPINNING SPEED RPM					

RUGOSITA' (UNI 4600)	MODIFICA	1	2	3	4	5	 CLEANING HEADS MONTECCHIO E. (RE) - ITALY
	FOGLIO	xxxx					
	DATA	xx.xx.xx					
GREZZO	TOLLERANZE GENERALI classe m UNI-EN 22768/1						
~ = √	0±6	6±30	30±120	120±400	400±1000	1000±2000	DISEGN.: CR CONTR.: DM DATA: 26.07.05 MOD.
SGROSS	±0.1	±0.2	±0.3	±0.5	±0.8	±1.2	SCALE 1:1 A3 0
▽ = 3.2/▽	NOTE: VERSION .05						CODICE: PW 200-SP
FINITURA	MATERIALE: STAINLESS STEEL						
▽▽ = 1.6/▽	DESCRIZIONE: APPLICATION DRAWING						
RETTIFICA							
▽▽▽ = 0.8/▽							