

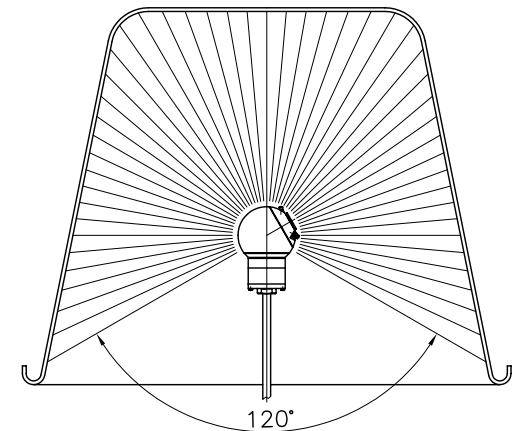
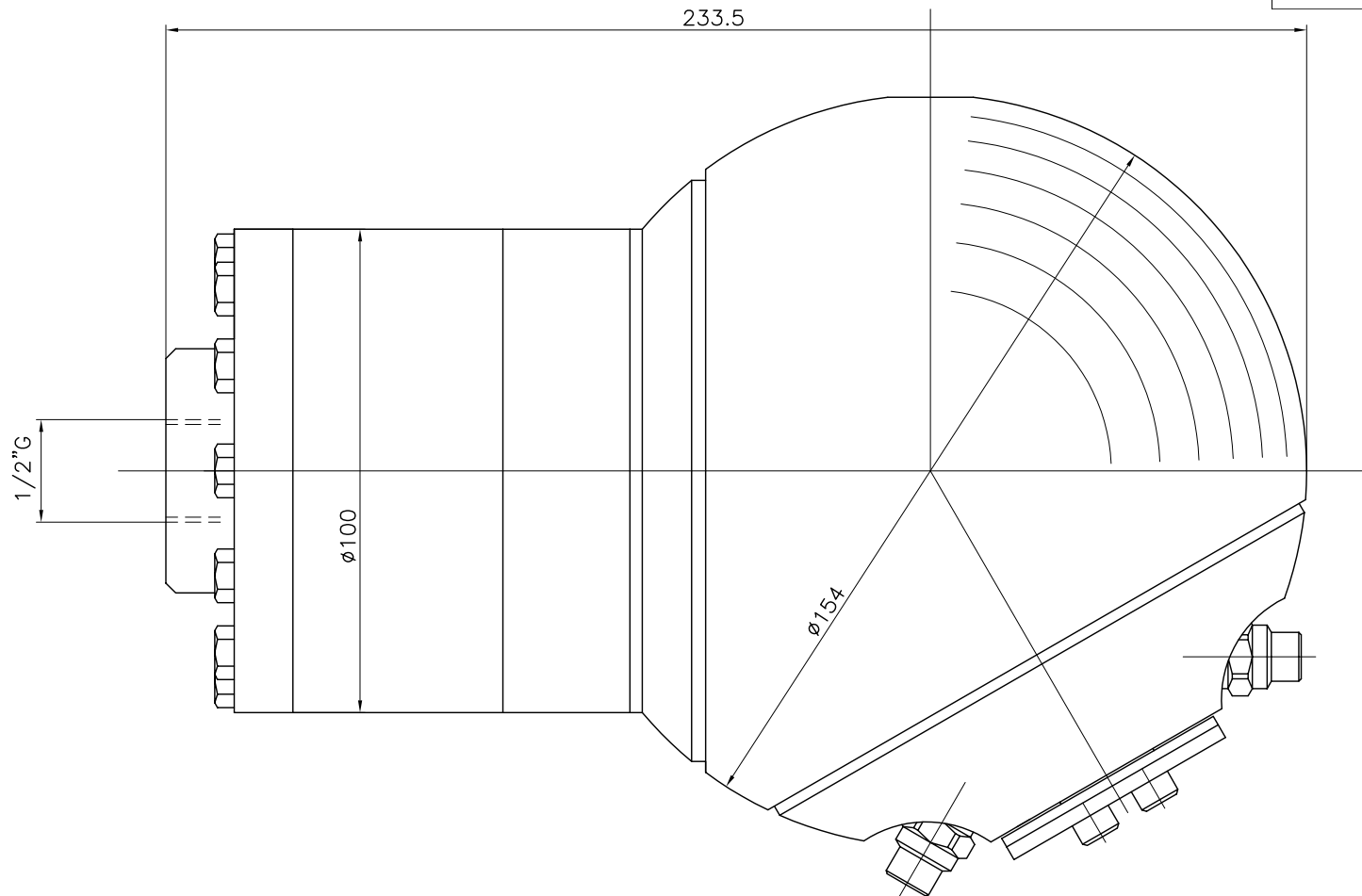


總代理

思沛雅噴霧器材有限公司

22205 新北市深坑區北深路三段270巷8號3樓 TEL. 02-8662-6968 FAX. 02-8662-6967

Website : www.sprayernozzle.com.tw E-mail : sales@sprayernozzle.com.tw



DATI TECNICI (I)	
temperatura max	90°C
pressione max	200 bar
portata max	30-120 l/min
velocità di rotazione	120 g/min
tempo ciclo breve	15"
tempo ciclo completo	30"
diametro minimo foro	160 mm
entrata	1/2"G
ugelli	1/4"G
massa	7.5 Kg

TECHNICAL DATA (GB)	
temperature max	90°C
pressure max	200 bar
flow max	30-120 l/min
spinning speed	120 g/min
short washing cycle time	15"
complete washing cycle time	30"
min. pass-through hole dia.	160 mm
water inlet	1/2"G-BSP-M
nozzle size	1/4"G-BSP-M
weight	7.5 Kg

RUGOSITA' (UNI 4600)	MODIFICA					
	1	2	3	4	5	
FOGLIO DATA	XXXX					
DATA	XX.XX.XX					
GREZZO	TOLLERANZE GENERALI classe m UNI-EN 22768/1					
~ = √	0±6	6±30	30±120	120±400	400±1000	1000±2000
SGROSS.	±0.1	±0.2	±0.3	±0.5	±0.8	±1.2
▽ = 3.2/▽	NOTE: VERSIONE 06					
FINITURA	MATERIALE:					
▽ = 1.6/▽						
RETTIFICA	DESCRIZIONE: AQUAMOTOR SECTOR PER LAVACASSONETTI 120°					
▽ = 0.8/▽						
 CLEANING HEADS MONTECCHIO E. (RE) - ITALY						
						DISEGN.: CR   CONTR.: DM
SCALA						
1:1		A4		0		
CODICE:						
SW 120SF						