

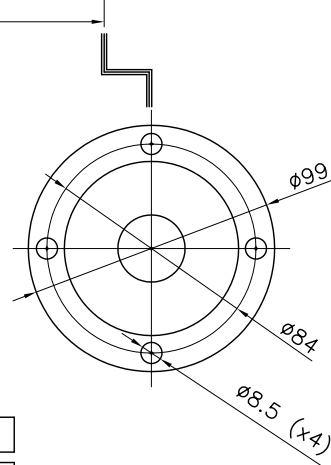
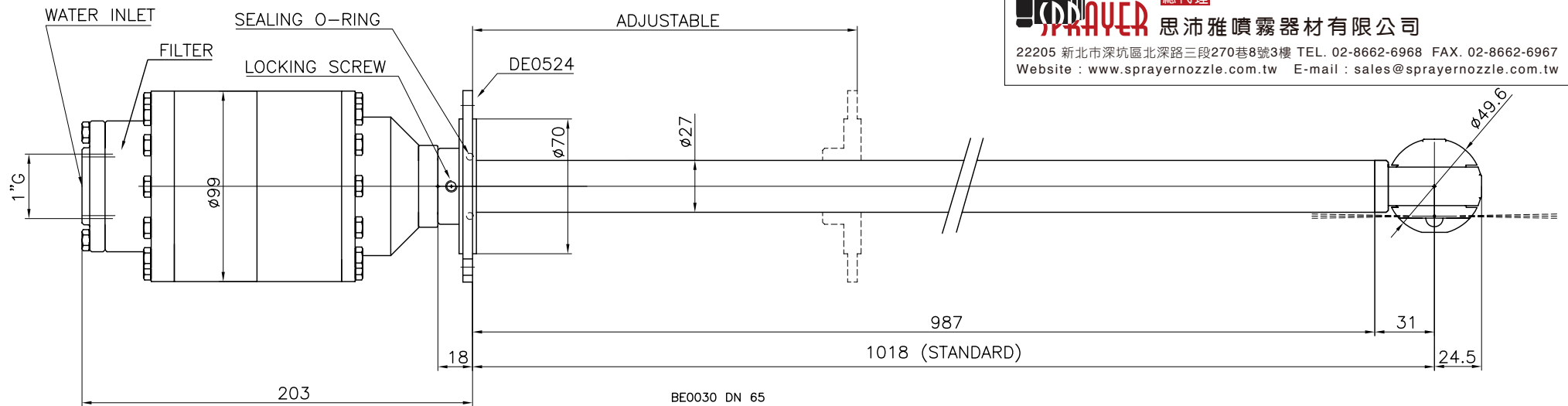


總代理

思沛雅噴霧器材有限公司

22205 新北市深坑區北深路三段270巷8號3樓 TEL. 02-8662-6968 FAX. 02-8662-6967

Website : www.sprayernozzle.com.tw E-mail : sales@sprayernozzle.com.tw



BE0030 DN 65
DIN 11851-52 NUT

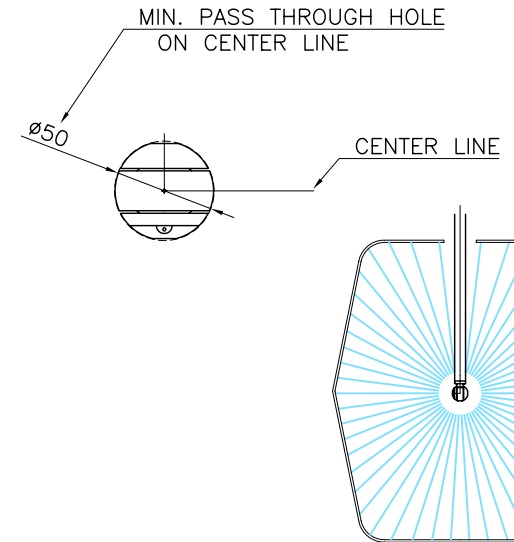
BE0011 DN 65
DIN 11851-52 FLANGE

BE0032 DN 80
DIN 11851-52 NUT

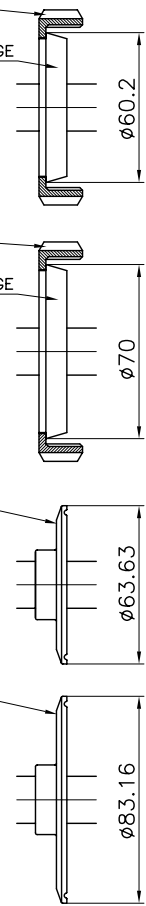
BE0010 DN 80
DIN 11851-52 FLANGE

BE0014 3"
TRI-CLAMP FLANGE

BE0015 4"
TRI-CLAMP FLANGE



TECHNICAL DATA	
O.RING	NBR - EPDM - VITON
SLIPPER	PTFE+CARBON FIBRE
FILTER	700 MICRON
NOZZLES POSITIONS	2/4
NOZZLES TYPE	SPECIAL NOZZLE XB060
OPERATING FLOW MAX	60 L/min
OPERATING PRESSURE MAX	200 bar
MAX OPERATING TEMPERATURE	90 °C
MATERIAL	INOX AISI 316
CONICAL GEARS	FIXED Z=23 ROTATING Z=25
MODULE	1
COMPLETE CYCLE	25 ROTATIONS
COMPLETE CYCLE TIME	1.1 MIN.
ROTATION SPEED	24 RPM
WEIGHT	7.5 KG



RUGOSITA' (UNI 4600)	MODIFICA	1	2	3	4	5
FOGLIO	XXXX					
DATA	XX.XX.XX					
GREZZO	TOLLERANZE GENERALI classe m UNI-EN 22768/1					
~ = √	0±6	6±30	30±120	120±400	400±1000	1000±2000
SGROSS.	± 0.1	± 0.2	± 0.3	± 0.5	± 0.8	± 1.2
∇ = 3.2/∇	NOTE:					
FINITURA	DESCRIZIONE: APPLICATION DRAWING					
∇∇ = 1.6/∇	XB 061 AAH					
RETTIFICA						
∇∇∇ = 0.8/∇						

Bolondi
CLEANING HEADS
MONTECCHIO E. (RE) - ITALY

DEISEGN.: CR | CONTR.: DM
DATA: 18.12.06 | MOD.
SCALA: 1:3 | A4 | 0
CODICE: XB 061AAH