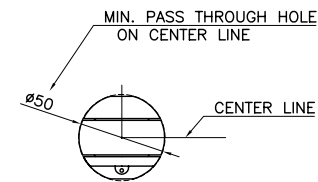
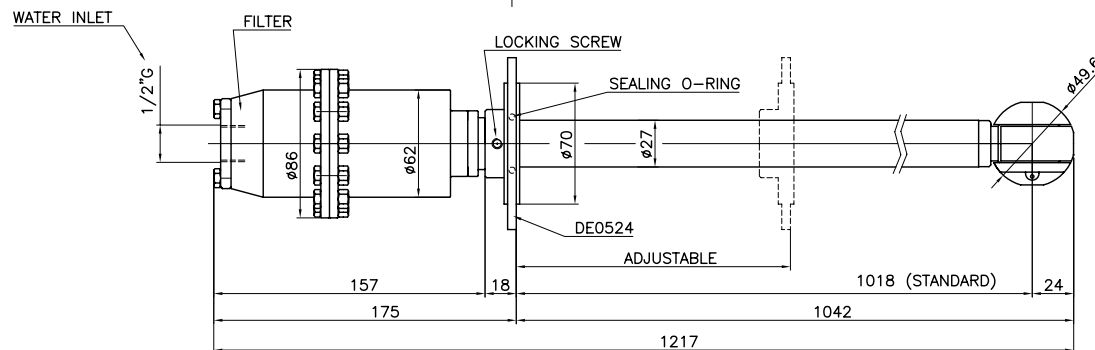
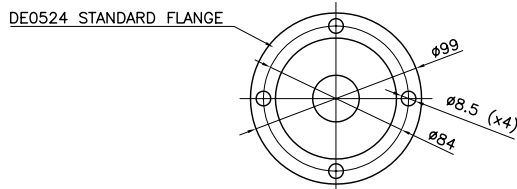


FLOW L/MIN	DIFFUSER CODE - HOLES	
	10	DF0401
15	DF0403	12x2.30
20	DF0403	12x2.30
25	DF0405	12x2.70
30	DF0406	12x3.00
35	DF0408	12x3.40
40	DF0419	18x3.20
45	DF0419	18x3.20
50	DF0420	18x3.40
55	DF0420	18x3.40
60	DF0420	18x3.40

TECHNICAL DATA	
O.RING	NBR - EPDM - VITON
SLIPPER	PTFE+CARBON FIBRE
BUSHING	AISI 316
FILTER	700 MICRON
NOZZLES POSITIONS	2 - 4
NOZZLES THREAD	SPECIAL XB 060
TESTING NOZZLES	0 x DIA. 00.0
OPERATING FLOW RANGE	10 - 60 L/min
TESTING FLOW	00 L/min
OPERATING PRESSURE RANGE	0 - 200 bar
TESTING PRESSURE	000 bar
CENTER LINE MIN PASS THROUGH HOLE	50 mm
MANUAL MIN PASS THROUGH HOLE	50 mm
PIPE LENGHT	1018 mm (STANDARD)
MAX OPERATING TEMPERATURE	90 °C
MATERIAL	INOX AISI 316
CONICAL GEARS	FIXED Z=29 ROTATING Z=31
MODULE	1
ROTATION SPEED RANGE	15 TO 25 RPM
TESTING DIFFUSER CODE	DF0000 (SEE CHART)
FULL CYCLE	31 ROTATIONS
FULL CYCLE TIME	1.5 min AT 20 RPM
WEIGHT	3.2 KG



BE0030 DN 65  
DIN 11851-52 NUT

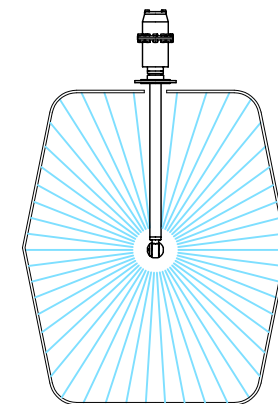
BE0011 DN 65  
DIN 11851-52 FLANGE

BE0032 DN 80  
DIN 11851-52 NUT

BE0010 DN 80  
DIN 11851-52 FLANGE

BE0014 3"  
TRI-CLAMP FLANGE

BE0015 4"  
TRI-CLAMP FLANGE



RUGOSITA' (UNI 4600)	MODIFICA	1	2	3	4	5	CLEANING HEADS MONTECCHIO E. (RE) - ITALY
	FOGLIO DATA	XXXX					
GREZZO	TOLLERANZE GENERALI classe m UNI-EN 22768/1						DISEGN.: CR   CONTR.: DM DATA: 06.07.09   MOD. CODICE: XB 061 A
SGROSS.	0÷6	6÷30	30÷120	120÷400	400÷1000	1000÷2000	
FINITURA	DESCRIZIONE: XB 061 A APPLICATION DRAWING						
RETTIFICA							