

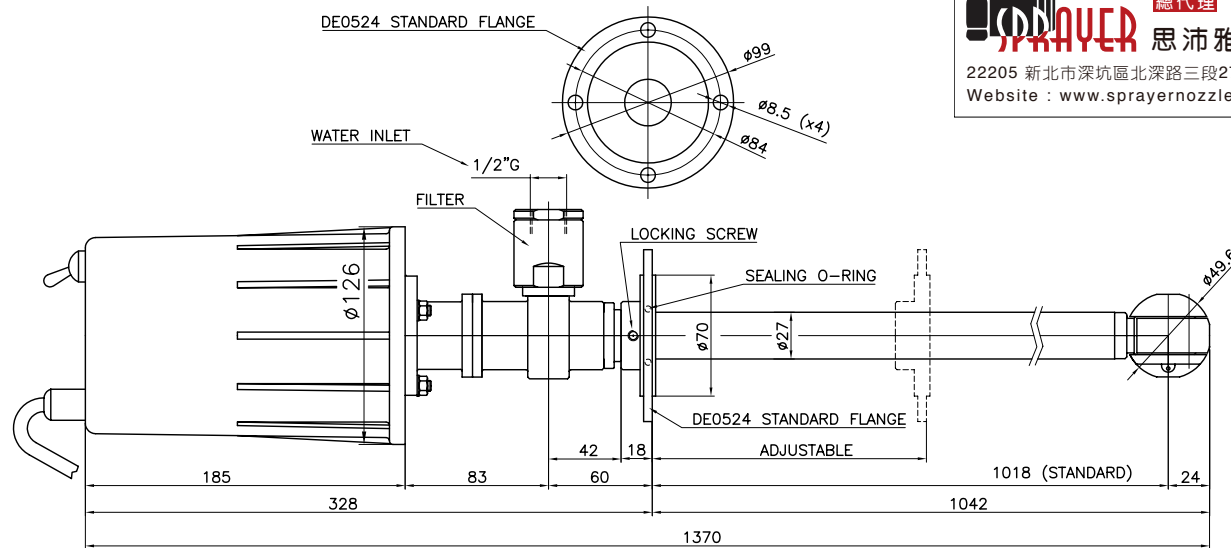


總代理

思沛雅噴霧器材有限公司

22205 新北市深坑區北深路三段270巷8號3樓 TEL. 02-8662-6968 FAX. 02-8662-6967

Website : www.sprayernozzle.com.tw E-mail : sales@sprayernozzle.com.tw



TECHNICAL DATA	
O-RING	NBR - EPDM - VITON
SLIPPER	PTFE+CARBON FIBRE
BUSHING	AISI 316
FILTER	700 MICRON
NOZZLES POSITIONS	2 - 4
NOZZLES THREAD	SPECIAL XB 060
TESTING NOZZLES	0 x DIA. 00.0
OPERATING FLOW RANGE	0 - 60 L/min
TESTING FLOW	00 L/min
OPERATING PRESSURE RANGE	0 - 200 bar
TESTING PRESSURE	000 bar
CENTER LINE MIN PASS THROUGH HOLE	50 mm
MANUAL MIN PASS THROUGH HOLE	50 mm
PIPE LENGTH	1018 mm (STANDARD)
MAX OPERATING TEMPERATURE	90 °C
MATERIAL	INOX AISI 316
CONICAL GEARS	FIXED Z=29 ROTATING Z=31
MODULE	1
FULL CYCLE	31 ROTATIONS
FULL CYCLE TIME	1.5 min
ELECTRIC MOTOR	BB0015
ELECTRIC MOTOR VOLT	24V DC/AC
WEIGHT	7.5 KG

BE0030 DN 65
DIN 11851-52 NUT

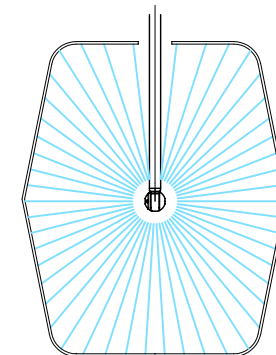
BE0011 DN 65
DIN 11851-52 FLANGE

BE0032 DN 80
DIN 11851-52 NUT

BE0010 DN 80
DIN 11851-52 FLANGE

BE0014 3"
TRI-CLAMP FLANGE

BE0015 4"
TRI-CLAMP FLANGE



RUGOSITA' (UNI 4600)	MODIFICA	1	2	3	4	5	 CLEANING HEADS MONTECCHIO E. (RE) - ITALY
	FOGLIO DATA	XXXX XX.XX.XX					
GREZZO	TOLLERANZE GENERALI classe m UNI-EN 22768/1						DISEGN.: CR CONTR.: DM DATA: 06.07.09 MOD.
SGROSS.	0±6	6±30	30±120	120±400	400±1000	1000±2000	
FINITURA	NOTE:						DESCRIZIONE: XB 061 E APPLICATION DRAWING
RETTIFICA	SCALE: 1:3 A3 0 CODICE: XB 061 E						