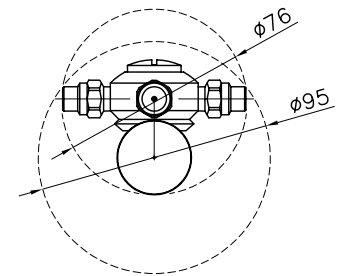
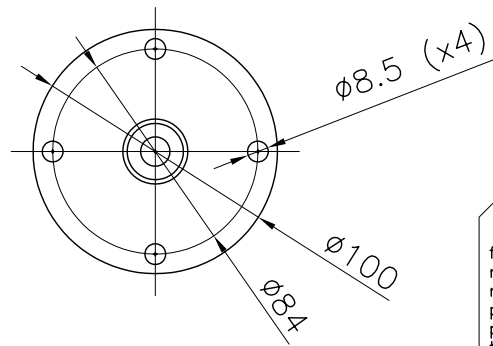
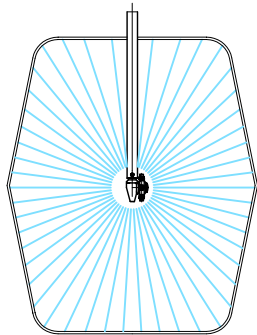


ROTATION SPEED AIR PRESSURE AND CONSUMPTION		
19 RPM	1 bar	155 L/min
28 RPM	2 bar	230 L/min
33 RPM	3 bar	275 L/min
37 RPM	4 bar	320 L/min
40 RPM	5 bar	360 L/min
51 RPM	6 bar	395 L/min



flangiatura: coassiale materiale: inox 316 motore: pneumatico portata max: 60 l/min pressione max: 400 bar temperatura max: 100°C tenute: nbr, epdm, viton ugelli: 1/8"G portaugelli: 2-4 vie	flanging: coaxial materials: stainless steel 316 motor: pneumatic flow max: 60 l/min pressure max: 400 bar temperature max: 100°C seals: nbr, epdm, viton nozzles: 1/8"G nozzle holder: 2-4 holes
---	---



RUGOSITA' (UNI 4600)	MODIFICA	1	2	3	4	5
	FOGLIO	XXXX				
	DATA	XX.XX.XX				
GREZZO	TOLLERANZE GENERALI classe m UNI-EN 22768/1					
~ = ✓	0÷6	6÷30	30÷120	120÷400	400÷1000	1000÷2000
SGROSS.	± 0.1	± 0.2	± 0.3	± 0.5	± 0.8	± 1.2
▽ = 3.2/▽	NOTE: VERSION 400 BAR					
FINITURA	DESCRIZIONE: DISEGNO DI APPLICAZIONE					
▽▽ = 1.6/▽	XC 060 P					
RETTIFICA	INSTALLATION DRAWING					
▽▽▽ = 0.8/▽	XC 060 P					

**Bolondi**  
CLEANING HEADS  
MONTECCHIO E. (RE) - ITALY

DISEGN.: CR | CONTR.: DM  
DATA: 01.01.05 | MOD.

SCALA  
1:3 | A4 | 0

CODICE:  
XC 060 P

**SPRAYERN** 總代理  
**思沛雅噴霧器材有限公司**  
22205 新北市深坑區北深路三段270巷8號3樓 TEL. 02-8662-6968 FAX. 02-8662-6967  
Website : www.sprayernozzle.com.tw E-mail : sales@sprayernozzle.com.tw