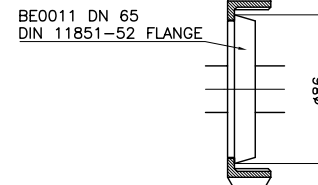


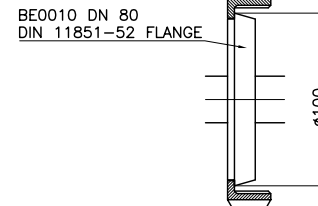
DIFFUSER CODE - HOLES	
10	DF0401 - 6x1.50
15	DF0403 - 12x2.30
20	DF0403 - 12x2.30
25	DF0405 - 12x2.70
30	DF0406 - 12x3.00
35	DF0408 - 12x3.40
40	DF0419 - 18x3.20
45	DF0419 - 18x3.20
50	DF0420 - 18x3.40
55	DF0420 - 18x3.40
60	DF0420 - 18x3.40

TECHNICAL DATA	
O.RING	NBR - EPDM - VITON
SLIPPER	PTFE+CARBON FIBRE
BUSHING	AISI 316
FILTER	700 MICRON
NOZZLES POSITIONS	2 - 4
NOZZLES THREAD	1/8"NPT
TESTING NOZZLES	0 x 0000
OPERATING FLOW RANGE	10 - 60 L/min
TESTING FLOW	00 L/min
OPERATING PRESSURE RANGE	0 - 200 bar
TESTING PRESSURE	000 bar
CENTER LINE MIN PASS THROUGH HOLE	95 mm
MANUAL MIN PASS THROUGH HOLE	76 mm
PIPE LENGHT	1018 mm (STANDARD)
MAX OPERATING TEMPERATURE	90 °C
MATERIAL	INOX AISI 316
CONICAL GEARS	FIXED Z=29 ROTATING Z=31
MODULE	1
ROTATION SPEED RANGE	15 TO 25 RPM
TESTING DIFFUSER CODE	DF0000 (SEE CHART)
FULL CYCLE	48 ROTATIONS
FULL CYCLE TIME	2.4 min AT 20 RPM
WEIGHT	3.2 KG

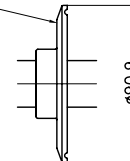
BE0030 DN 65
DIN 11851-52 NUT



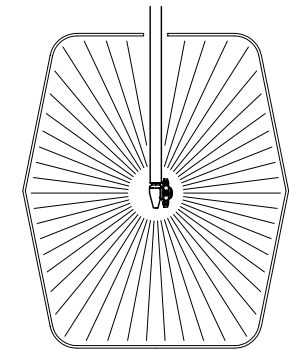
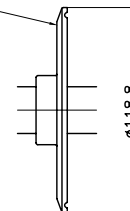
BE0032 DN 80
DIN 11851-52 NUT




BE0014 3"
TRI-CLAMP FLANGE



BE0015 4"
TRI-CLAMP FLANGE



RUGOSITA' (UNI 4600)	MODIFICA	1	2	3	4	5	 CLEANING HEADS MONTECCHIO E. (RE) - ITALY
	FOGLIO DATA	XXXX					
GREZZO	TOLLERANZE GENERALI classe m UNI-EN 22768/1						DISEGN.: CR CONTR.: DM DATA: 02.10.08 MOD. CODICE: XC 061 A
~ = ✓	0±6 6±30 30±120 120±400 400±1000 1000±2000						
SGROSS. ∇ = 3.2/∇	±0.1 ±0.2 ±0.3 ±0.5 ±0.8 ±1.2						
FINITURA ∇∇ = 1.6/∇	DESCRIZIONE: XC 061 A APPLICATION DRAWING						
RETTIFICA ∇∇∇ = 0.8/∇							