

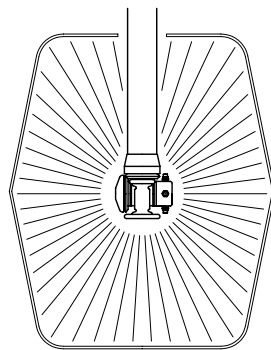
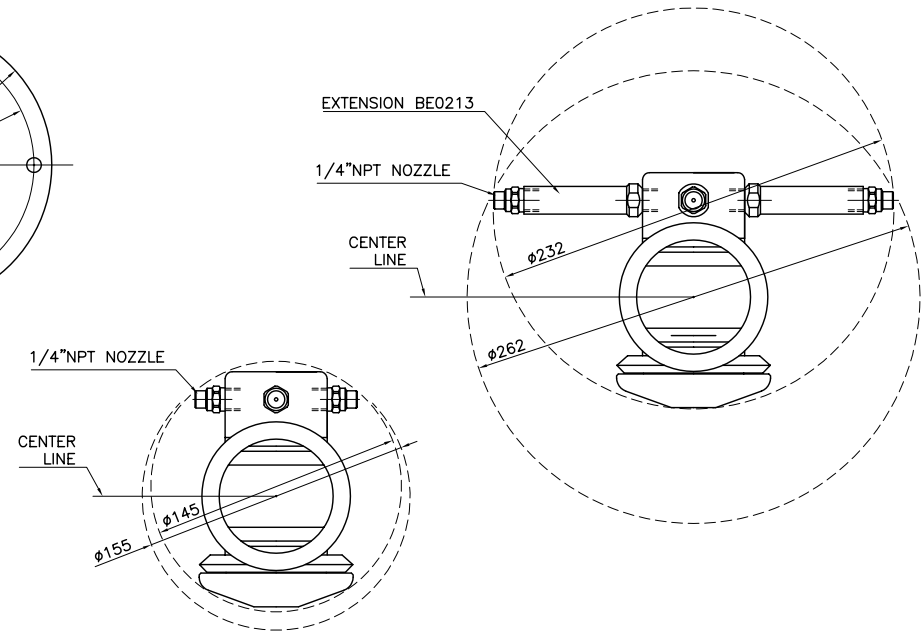
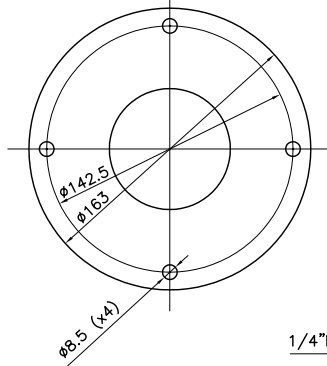
總代理

思沛雅噴霧器材有限公司

22205 新北市深坑區北深路三段270巷8號3樓 TEL. 02-8662-6968 FAX. 02-8662-6967  
 Website : www.sprayernozzle.com.tw E-mail : sales@sprayernozzle.com.tw

TECHNICAL DATA

O.RING	NBR - EPDM - VITON			
SLIPPER	PTFE+CARBON FIBRE			
BUSHING	AISI 316			
FILTER	NONE			
NOZZLES POSITIONS	2 - 4			
NOZZLES THREAD	1/4"NPT			
TESTING NOZZLES	0 x 0000			
OPERATING FLOW RANGE	0 - 200 L/min			
TESTING FLOW	000 L/min			
OPERATING PRESSURE RANGE	0 - 200 bar			
TESTING PRESSURE	000 bar			
CENTER LINE MIN PASS THROUGH HOLE	155 mm W/O EXTENSIONS	262 mm WITH EXTENSIONS		
MANUAL MIN PASS THROUGH HOLE	145 mm W/O EXTENSIONS	232 mm WITH EXTENSIONS		
PIPE LENGHT	750 mm (STANDARD)			
MAX OPERATING TEMPERATURE	90 °C			
MATERIAL	INOX AISI 316			
CONICAL GEARS	FIXED Z=41 ROTATING Z=43			
MODULE	2			
FULL CYCLE	43 ROTATIONS			
GEARBOX	W/MOTOR	BB0743	BB0761	BB0761
ELECTRIC MOTOR	BB0015	BA0102	BA0130	BA0127 EEX
ELECTRIC MOTOR VOLTS	24V AC/DC	230V 50Hz 1ph	400V 50Hz 3ph	400V 50Hz 3ph
ELECTRIC MOTOR AMPS	0.30 A	0.23 A	0.70 A	0.70 A
ROTATION SPEED	17 RPM	14 RPM	20 RPM	20 RPM
FULL CYCLE TIME	2.5 min	3.1 min	2.2 min	2.2 min
WEIGHT	14.2 KG			



RUGOSITA' (UNI 4600)	MODIFICA	1	2	3	4	5	<b>Bolondi</b> CLEANING HEADS MONTECCHIO E. (RE) - ITALY
	FOGLIO DATA	XXXX					
GREZZO	TOLLERANZE GENERALI classe m UNI-EN 22768/1						DESEGN.: CR   CONTR.: DM DATA: 06.10.08   MOD. SCALE: 1:3   A3   0 CODICE: XC 200 E
~ = √	0±6	6±30	30±120	120±400	400±1000	1000±2000	
SGROSS.	±0.1	±0.2	±0.3	±0.5	±0.8	±1.2	NOTE: DESCRIZIONE: XC 200 E APPLICATION DRAWING
∇ = 3.2/∇							
FINITURA							
∇∇ = 1.6/∇							
RETTIFICA							
∇∇∇ = 0.8/∇							