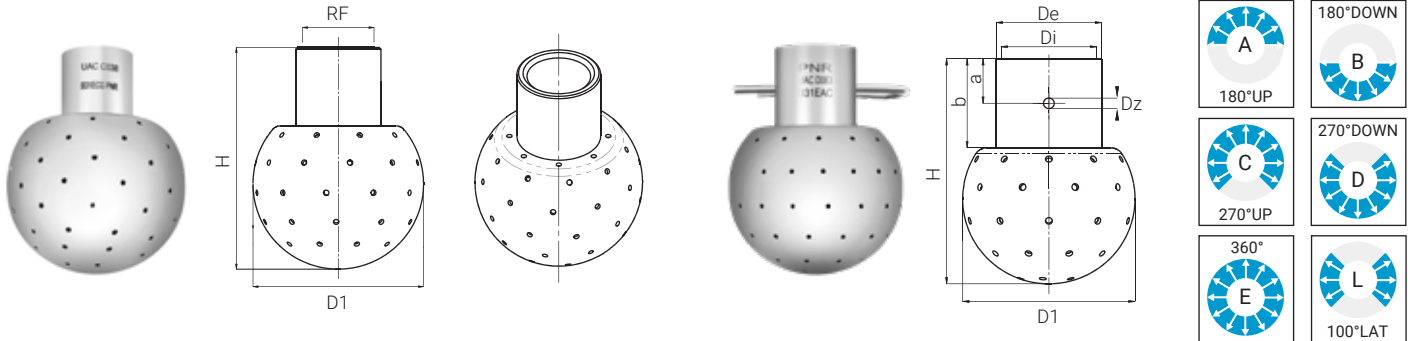


# UAC

UAC fixed spray heads are a simple, fast and efficient device for cleaning the inside of small size tanks where a simple rinsing action is required. Because of the relatively high washing fluid flow rate, they are usually operated at low pressures and can achieve a limited impact action on the tank wall. Their simple design allows for the head to be easily cleaned after being operated, which makes it possible to leave the heads permanently in place ready for use. The values for wetting radiuses shown at the right of the table have been obtained operating the heads with a water pressure value of 1 bar. On request, heads with electropolishing Ra < 0,8 µm are available, in order to have roughness for alimentary applications.

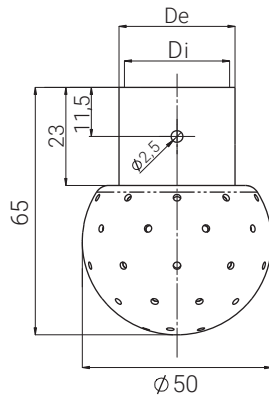
MATERIAL: 31 AISI 316L STAINLESS STEEL CONNECTION: FEMALE THREAD (BSPP - NPT);  
 L8 HASTELLOY C267 (ON REQUEST) CLIP-ON; WELDED.  
 H1 TITANIUM GR2 (ON REQUEST)



SERIES	Size available (mm)					Capacity code	Mat.	Coverage						Thread dimension		Connection				Capacity at different pressures (bar)					WR			
	D1	A	B	C	D			E							RF		Threaded				0,5	1,0	1,0	2,0		3,0		
	(Clip)	a	b	Dz							1/8"	1/4"	3/8"	1/2"	3/4"	1"	1-1/4"	Clip / Welded	BSPP	NPT	Clip-on	Welded	l/min	m³/h		l/min	l/min	l/min
UAC						012	B31	A	B	C*	D*	E*	L*						G	N	C	W	14,0	1,20	20,0	28,0	35,0	0,5
UAC	A					014	B31	A	B	C*	D*	E*	L*	A					G	N	C	W	16,0	1,40	23,3	33,0	40,0	0,8
UAC						018	B31	A	B	C*	D*	E*	L*						G	N	C	W	21,0	1,80	30,0	42,0	54,0	0,8
UAC						021	B31	A	B	C*	D*	E*	L*						G	N	C	W	25,0	2,10	35,0	50,0	61,0	1,0
UAC						031	B31	A	B	C	D	E	L						G	N	C	W	37,0	3,10	51,7	73,0	90,0	1,1
UAC						038	B31	A	B	C	D	E	L	B					G	N	C	W	45,0	3,80	63,3	90,0	110	1,2
UAC						047	B31	A	B	C	D	E	L						G	N	C	W	55,0	4,70	78,3	111	136	0,9
UAC						054	B31	A	B	C	D	E	L						G	N	C	W	64,0	5,40	90,0	127	156	1,0
UAC						063	B31	A	B	C	D	E	L						G	N	C	W	74,0	6,30	105	149	182	1,2
UAC						072	B31	A	B	C	D	E	L						G	N	C	W	85,0	7,20	120	170	208	1,3
UAC						078	B31	A	B	C	D	E	L						G	N	C	W	92,0	7,80	130	184	225	1,5
UAC						086	B31	A	B	C	D	E	L						G	N	C	W	101	8,60	143	203	248	1,6
UAC						092	B31	A	B	C	D	E	L						G	N	C	W	108	9,20	153	217	266	1,6
UAC						102	B31	A	B	C	D	E	L						G	N	C	W	120	10,2	170	240	295	1,7
UAC						110	B31	A	B	C	D	E	L						G	N	C	W	130	11,0	183	250	318	1,8
UAC						123	B31	A	B	C	D	E	L						G	N	C	W	145	12,3	205	290	355	1,8
UAC						132	B31	A	B	C	D	E	L						G	N	C	W	155	13,2	220	310	381	1,9
UAC						157	B31	A	B	C	D	E	L						G	N	C	W	185	15,7	262	370	453	2,0
UAC						160	B31	A	B	C	D	E	L						G	N	C	W	190	16,0	267	277	462	2,0
UAC						175	B31	A	B	C	D	E	L						G	N	C	W	207	17,5	292	413	505	2,1
UAC						209	B31	A	B	C	D	E	L						G	N	C	W	246	20,9	348	492	603	2,4
UAC						217	B31	A	B	C	D	E	L						G	N	C	W	256	21,7	362	512	627	2,5
UAC						228	B31	A	B	C	D	E	L						G	N	C	W	270	22,8	380	537	660	2,7
UAC						242	B31	A	B	C	D	E	L						G	N	C	W	285	24,2	403	570	700	2,8
UAC						286	B31	A	B	C	D	E	L						G	N	C	W	337	28,6	477	675	825	3,0
UAC						321	B31	A	B	C	D	E	L						G	N	C	W	380	32,1	535	755	925	3,1
UAC						371	B31	A	B	C	D	E	L						G	N	C	W	437	37,1	618	875	1070	3,2
UAC						431	B31	A	B	C	D	E	L						G	N	C	W	510	43,1	718	1015	1245	3,4
UAC						491	B31	A	B	C	D	E	L						G	N	C	W	580	49,1	818	1160	1412	3,5

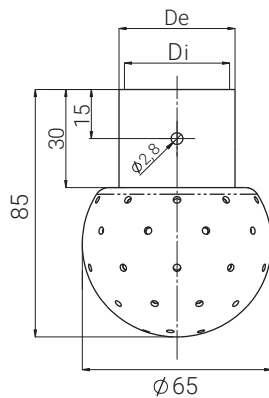
Letters marked with \* in "Spray coverage" section state that those models are not available for "Thread Dimension" = 1/8" (letter A)





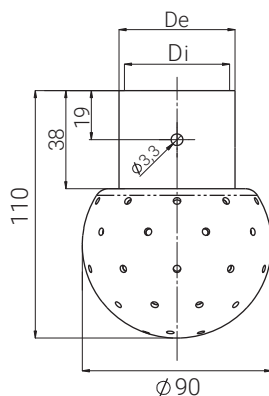
Type C Ø50mm

	CLIP-ON		WELDED	
	(De x Di)	Pipe	(De x Di)	Pipe
A	Ø 24,5 x 22,5	DN15 - DIN 11886/B	Ø 22 x 20	DN20 - DIN 11850/1
B	Ø 25,5 x 23,5	DN20 - DIN 11886/A	Ø 23 x 20	DN20 - DIN 11886/A
C	Ø 23,8 x 21,8	DN15 - DIN 11886/B	Ø 21,3 x 15,8	ASTM A 213 1/2" 40S
D	Ø 28 x 26	DN25 - DIN 11886/C	Ø 26,7 x 20,9	ASTM A 213 3/4" 40S
E	Ø 30,2 x 28,2	DN25 - DIN 11886/B	Ø 29 x 26	DN25 - DIN 11850/1
F	Ø 22 x 20	/	Ø 25,4 x 22,2	DN25 - DIN 11886/A
G			Ø 28 x 26	DN25 - DIN 11886/C



Type D Ø65mm

	CLIP-ON		WELDED	
	De x Di	Pipe	De x Di	Pipe
A	Ø 30,5 x 28,5	DN25 - DIN 11850/1	Ø 28 x 26	DN25 - DIN 11850/1
B	Ø 31,5 x 29,5	DN25 - DIN 11886/A	Ø 29 x 26	DN25 - DIN 11886/A
C	Ø 36,5 x 34,5	DN32 - DIN 11850/1	Ø 34 x 32	DN32 - DIN 11850/1
D	Ø 28 x 26	DN25 - DIN 11886/C	Ø 35 x 32	DN32 - DIN 11886/A
E	Ø 32 x 30	/	Ø 26,7 x 20,9	ASTM A 213 3/4" 40S
F	Ø 38 x 36	/	Ø 33,4 x 26,6	ASTM A 213 1" 40S
G	Ø 37,5 x 35,5	DN32 - DIN 11886/A	Ø 40 x 38	DN40 - DIN 11850/1
H	Ø 42,5 x 40,5	DN40 - DIN 11850/1	Ø 41 x 38	DN40 - DIN 11886/A
I	Ø 29,2 x 27,2	ASTM A 213 3/4"		
J	Ø 35,9 x 33,9	ASTM A 213 1"		



Type E Ø90mm

	CLIP-ON		WELDED	
	De x Di	Pipe	De x Di	Pipe
A	Ø 36,5 x 34,5	DN32 - DIN 11850/1	Ø 34 x 32	DN32 - DIN 11850/1
B	Ø 37,5 x 35,5	DN32 - DIN 11886/A	Ø 35 x 32	DN32 - DIN 11886/A
C	Ø 42,5 x 40,5	DN40 - DIN 11850/1	Ø 40 x 38	DN40 - DIN 11850/1
D	Ø 43,5 x 41,5	DN40 - DIN 11886/A	Ø 41 x 38	DN40 - DIN 11886/A
E	Ø 32 x 30	/	Ø 52 x 50	DN50 - DIN 11850/1
F	Ø 38 x 36	/	Ø 33,4 x 26,6	ASTM A 213 1" 40S
G	Ø 54,5 x 52,5	DN50 - DIN 11850/1	Ø 42,2 x 35	ASTM A 213 1-1/4" 40S
H	Ø 55,5 x 53,5	DN50 - DIN 11886/A	Ø 48,2 x 40,9	ASTM A 213 1-1/2" 40S
I	Ø 35,9 x 33,9	ASTM A 213 1"	Ø 60,3 x 52,5	ASTM A 213 2" 40S
J	Ø 44,7 x 42,7	ASTM A 213 1-1/4"	Ø 53 x 50	DN50 - DIN 11886/A
K	Ø 50,8 x 48,8	ASTM A 213 1-1/2"	Ø 38,1 x 34,9	DN40 - DIN 11886/C
L	Ø 62,8 x 60,8	ASTM A 213 2"		

總代理



思沛雅噴霧器材有限公司

22205 新北市深坑區北深路三段270巷8號3樓 Website : [www.sprayer.com.tw](http://www.sprayer.com.tw)

TEL. 02-8662-6968 FAX. 02-8662-6967 E-mail : [sales@sprayer.com.tw](mailto:sales@sprayer.com.tw)