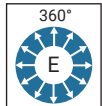
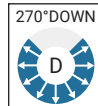
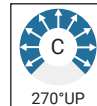
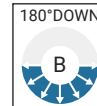


UBC

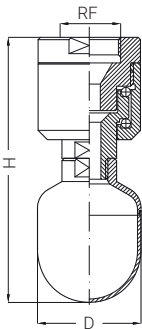
UBC series heads are completely made out of stainless steel, with the rotating sphere rolling on two ball bearing rows, to make operation possible in any position. Inner and outer surfaces are carefully machined, deburred, cleaned and polished to a precisely defined roughness grade to avoid contamination from bacterial growth. UBC series heads are available with different connection designs, that is a female thread and a clip-on connection as standard, on request a weld-on or a *tri-clamp connection (with this configuration, the head cannot be ATEX certified)*. The robust and simple design, the high quality construction, long trouble-free service and remarkable efficiency have made them very popular for general purpose applications, in thousands of applications all over the world. The UBC washing head is also available with an NPT connection.

MATERIAL: B31 AISI 316L STAINLESS STEEL
L61 ALLOY C22

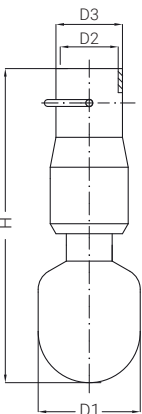
Washing liquid for ATEX products
T ≤ 90°C



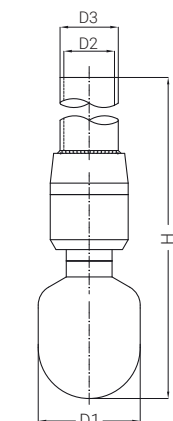
Female BSP or NPT Thread



UBC threaded connect.



UBC clip-on connection



UBC welded connection

CODE	Capacity at different pressures				l/min bar	Spray coverage deg				RF BSP					Dimensions mm	
	2,0	3,0	5,0	7,0		360	270u	270d	180d	3/8"	1/2"	3/4"	1"	1-1/4"	H	D
UBC 2100 B31xG	8,16	10,0	12,9	15,3						55	25
UBC 2300 B31xG	24,5	30,0	38,7	45,8						115	45
UBC 2480 B31xG	39,2	48,0	62,0	73,3						131	65
UBC 2629 B31xG	51,4	63,0	81,3	96,2							
UBC 2899 B31xG	73,5	90,0	116	137							
UBC 2630 B31xG	51,4	63,0	81,3	96,2							
UBC 2900 B31xG	73,5	90,0	116	137							
UBC 3135 B31xG	110	135	174	206							
UBC 3120 B31xG	98,0	120	155	183							
UBC 3215 B31xG	176	215	278	328							
UBC 3300 B31xG	245	300	387	458							

In case of NPT thread, the last letter of the code will be N instead of G.

Clip-on connection

Available on request with American pin. Last letter of the code: D insted of C

CODE	Capacity at different pressures				l/min bar	Spray coverage deg				Pipe connection mm	Clip-on Tubo	Standard	Dimensions mm	
	2,0	3,0	5,0	7,0		360	270u	270d	180d				H	D
UBC 2480 B31xC	39,2	48,0	62,0	73,3		22 x 20	3/4"	ASTMA 270	70	25
UBC 2630 B31xC	51,4	63,0	81,3	96,2		29 x 25,3	DN 25	SMS 3008	135	45
UBC 2900 B31xC	73,5	90,0	116	137		29 x 25,3	DN 25	SMS 3008	137	45
UBC 3120 B31xC	98,0	120	154	183		29 x 25,3	DN 25	SMS 3008	135	45
UBC 3135 B31xC	110	135	174	206		29 x 25,3	DN 25	SMS 3008	137	45
UBC 3178 B31xC	145	178	230	272		29 x 25,3	DN 25	SMS 3008	137	44,5
UBC 3300 B31xC	245	300	387	458		44 x 38,4	DN 40	SMS 3008	159	65

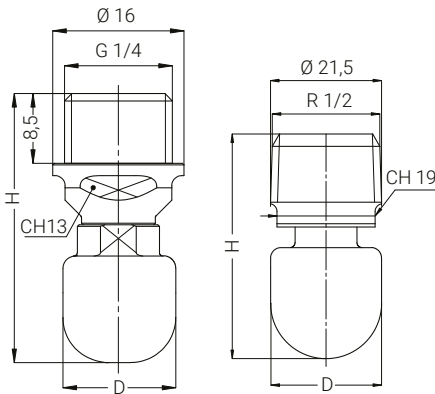
Welded connection

CODE	Capacity at different pressures				l/min bar	Spray coverage deg				Pipe connection mm	DN	Standard	Dimensions mm	
	2,0	3,0	5,0	7,0		360	270u	270d	180d				H	D
UBC 2200 B31xS	16,3	20,0	25,8	30,6		12,7 x 9,4	DN 10	DIN 11866/C	69	25
UBC 2300 B31xW	24,5	30,0	38,7	45,8		19,05 x 15,75	DN 15	DIN 11866/C	78	25
UBC 2630 B31xW	51,4	63,0	81,3	96,2		25,4 x 22,1	DN 25	DIN 11866/C	250	45
UBC 2900 B31xW	73,5	90,0	116	137		25,4 x 22,1	DN 25	DIN 11866/C	250	45
UBC 3120 B31xS	98,0	120	155	183		25 x 21	DN 25	DIN 11866/C	250	45
UBC 3135 B31xV	110	135	174	206		29 x 26	DN 25	DIN 11866/A	250	45
UBC 3300 B31xS	245	300	387	458		38 x 34	DN 40	DIN 11866/C	250	65

The version in L61 differs from that in B31 only for the material of realization while the performances, the dimensions and the modalities of connection remain the same.

UBC M007 B31BEG | UBC M023 B31DEB

This family of washing heads consists of the smallest models in the UBC range (see next page). They are obtained from machined steel and designed with similar geometry, differing only in size. Mainly used for washing small ovens, the two available sizes have threaded connection available both BSP (the smallest) and BSPT (the largest). If required, the NPT connection is also available.

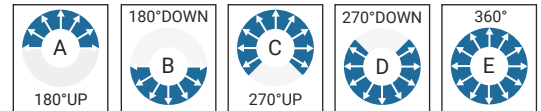


UBC M007 B31BEG

UBC M023 B31DEB

MATERIAL: B31 AISI 316L S.S.
L61 ALLOY C22

Washing liquid
for ATEX products
T ≤ 90°C



Welded male connection

CODE	Capacity l/min at pressure bar				Coverage deg				RG			Dimens. mm	
	2,0	3,0	5,0	7,0	360	270u	270d	180d	BSP	BSPT	NPT	H	D
UBC M007 B31BEG	5,7	7,0	9,0	10,7	.				1/4" BSP			32,8	14
UBC M023 B31DEB	18,9	23,0	29,4	34,5	.				1/2" BSPT			43,5	21,5

總代理



思沛雅噴霧器材有限公司

22205 新北市深坑區北深路三段270巷8號3樓 Website : www.sprayer.com.tw
TEL. 02-8662-6968 FAX. 02-8662-6967 E-mail : sales@sprayer.com.tw